

# GMC Tecom - Directions

## COMING FROM DUBAI

Take the Hessa street/D61 East exit just after Wellington International School. Enter the tunnel towards Barsha. As you exit the tunnel, keep right and take the first turn to the right by the Media Rotana hotel (signed Tecom). At the first roundabout turn right. Do a u-turn at the second roundabout. Take the second service road on the right. The entrance to Tameem House parking is on your left around the mini roundabout.

## COMING FROM AL SUFOUH

Take the turn by Dubai College and follow the road over the flyover (over SZR). As you come off the flyover, filter to the right and take the first turn to the right by the Media Rotana hotel (signed Tecom). At the first roundabout turn right. Do a u-turn at the second roundabout. Take the second service road on the right. The entrance to Tameem House parking is on your left around the mini roundabout.

## COMING FROM ABU DHABI

From Shk. Zayed Road (E11) take exit 36, signed Dubai Internet City. Take the exit on to the slip road, located near Emaar Business Park. Follow the slip road past Emaar Business Park, take the exit to the right signed for the Greens (Jebel Ali Racecourse Road), then go into the left lane and at the traffic lights turn left. Take a left at the first roundabout and carry on straight over the next roundabout. Take the second service road on the right. The entrance to Tameem House parking is on your left around the mini roundabout.

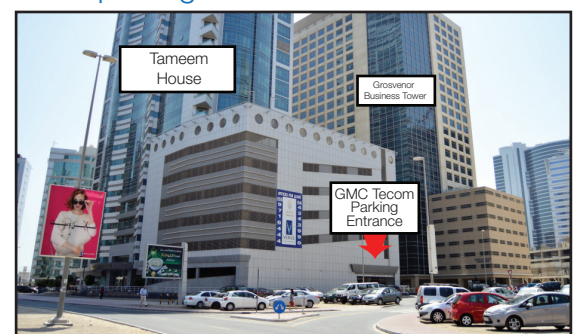


## GMC Tecom address

Tameem House  
3rd floor, suite 301  
Tecom  
Box 11962, Dubai, UAE

T 04 567 6888 | F 04 567 6889  
[www.gmcclinics.com](http://www.gmcclinics.com)

## FREE parking available in Tameem House



# GMC Clinics

Caring About Health